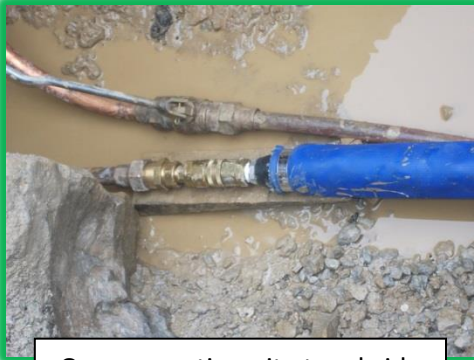


Flow-Liner®

“Potable Water Solution”

With a Pipe Lining Technology Answer



One excavation pit at curbside

Problem

A Pennsylvania residential home owner's water service line was leaking and needed repaired. The water service line ran underneath their newly installed concrete heated driveway.

Issue

The homeowner was looking for a non-invasive solution to repairing the 1 inch copper water service line to avoid excavating the new driveway. Their plumber contacted a Flow-Liner® Certified Neofit™ Installer for a solution.

Solution

A Flow-Liner® Certified Neofit™ Installer lined the existing 50 feet of 1 inch copper water service line with the Neofit™ product. Only one excavation pit was required at the curbside and access at the opposite end inside the house.

Results

The water service line, from city curb stop to the house, was successfully lined without excavation or disruption to the newly installed concrete heated driveway. The line was tested and placed back in service the same day. Customer was very satisfied with the finished project.



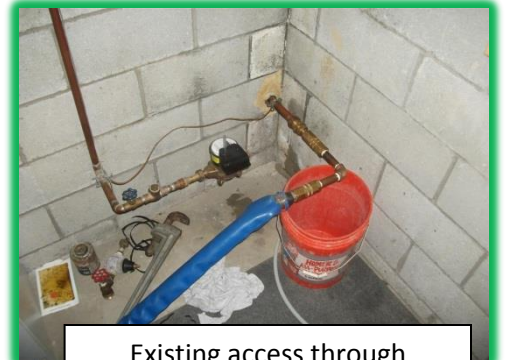
Certified to
NSF/ANSI 61



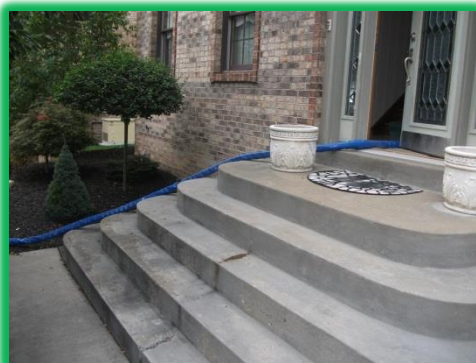
Neofit™ Equipment



Neofit™ Equipment Set-up from
curbside to house



Existing access through
basement wall



Water service line after
Neofit™ installed

We are pleased to announce another successful project and proudly add

Benjamin Franklin Plumbing

to our list of happy and satisfied customers.